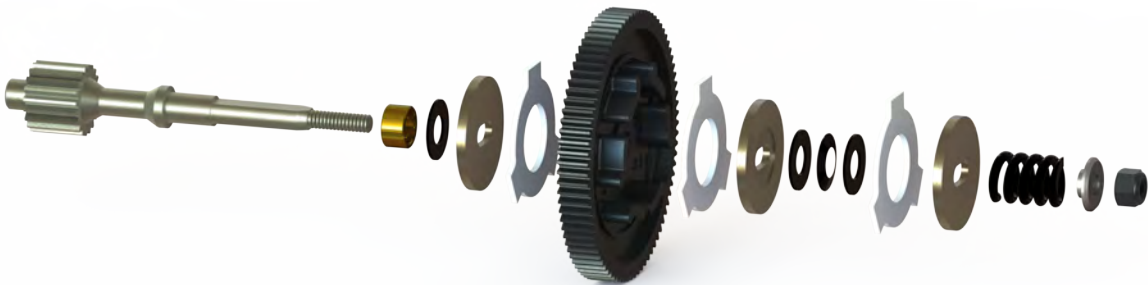


KYOSHO Topshaft Install Instructions

Keep kit supplied gold Kyosho topshaft spacer. In instruction procedure, do not use AVID thick topshaft spacer (black). Replace the thick AVID spacer with the included gold kyosho spacer followed by 1 thin centering washer which will keep the inner slipper plate centered on the topshaft. Otherwise, assemble per instructions and use the included M3 slipper nut (5.5mm hex). * View the exploded view on the other side of this insert.

AVID recommends a new idler gear (UMW513) and adding 2 drops of clear diff lube to the topshaft.



Visit us at avidrc.com

| Follow us on facebook.com/avidrc